

WE ARE HERE FOR YOUR STUDENTS



Welcome Days

Two full days dedicated to international students before teaching begins



Buddy System

To fit in and help each other out



Exchange Fair

An afternoon to present and taste international food



35% international students

Our International team is dedicated to helping your students

OUR PARTNERSHIPS - YOUR OPPORTUNITY



Over 10 dual degrees



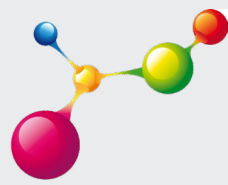
Partnerships

IChemE
Institution of Chemical Engineers



Erasmus+

Fédération
Gay-Lussac



Université
franco-allemande
Deutsch-Französische
Hochschule



NANCY IS A UNESCO WORLD HERITAGE SITE

ENSIC is located in Nancy's historical city center

90 minutes from Paris by train

In the heart of Europe



Contacts

ENSIC

1, rue Grandville
BP 20451
F - 54001 Nancy Cedex

📞 +33 (0)3 72 74 36 00

@ ensic-contact@univ-lorraine.fr

www.ensic.univ-lorraine.fr



Dimitrios Meimaroglou

Director of International Partnerships

📞 +33 (0)3 72 74 36 08

@ dimitrios.meimarogloul@univ-lorraine.fr

Cécile Lemaitre

Deputy director of International Partnerships

📞 +33 (0)3 72 74 36 08

@ cecile.lemaitre@univ-lorraine.fr

Claire Soitin

International Relations Manager

📞 +33 (0)3 72 74 36 20

@ claire.soitin@univ-lorraine.fr

Alexandre Collotte

International Relations Assistant

📞 +33 (0)3 72 74 36 19

@ alexandre.collotte@univ-lorraine.fr



Mai 2023.



ENSIC

➔ **A TOP-RANKING CHEMICAL
ENGINEERING SCHOOL
IN FRANCE**



WELCOME TO ENSIC


The heart of Chemical Engineering
at the Université de Lorraine



 **1st French University**
in Chemical Engineering
in the Shanghai ranking since 2017

 **2 internationally renowned**
research laboratories

 **4000 graduates**
working worldwide

 **2 master engineering**
programs and 1 master research
program

 **Institution of chemical
engineers**

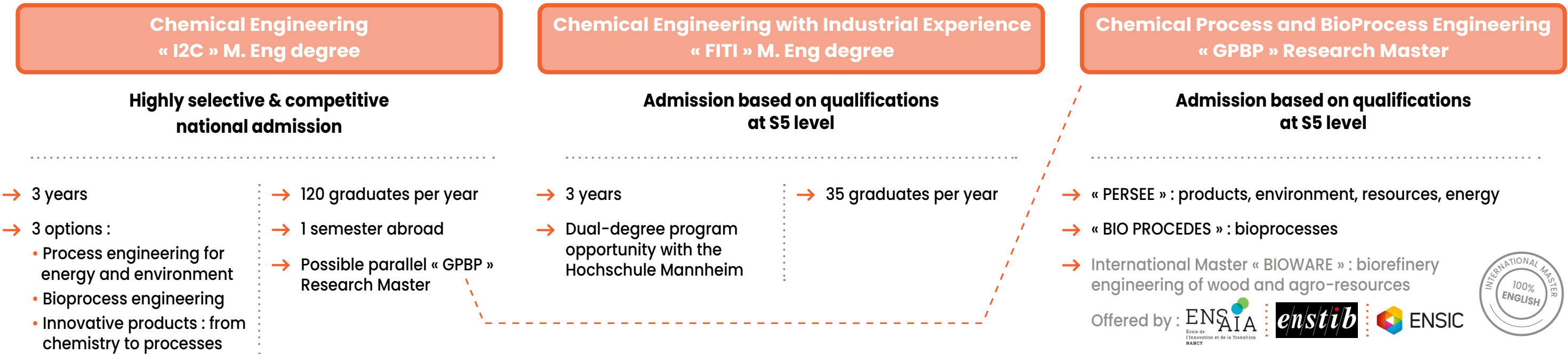


- Over 500 students
- More than 50 academic partnerships worldwide

 **Study in Nancy**

- Over 51 000 students
- 4th biggest university centre for engineering in France
- 400 € rent (average)
- 6 halls of residence

TOP RANKING EXPERTISE IN CHEMISTRY AND CHEMICAL ENGINEERING



ENGINEERING STUDIES IN FRANCE

S1	S2	S3	S4	S5	S6	S7	S8	S9	S10	
Preparatory class				ENSIC Engineering School						PhD Program
Bachelor						Master M1		Master M2		
60 European Credits		120		180		240		300		



RESEARCH OPPORTUNITIES

2 world-renowned research laboratories CNRS – Université de Lorraine
120 PhD students – 17 research teams



**Reactions and Chemical
Engineering Laboratory (LRGP)**

- Processes for environment, safety and resource valorization
- Intensification, optimazation and architectures of processes
- Bioprocesses, biomolecules
- Kinetics and thermodynamics for energy and products
- Product engineering



**Macromolecular Physical
Chemistry Laboratory (LCPM)**

- Self-assembly and smart materials
- Biomolecules and vectorization