

WE ARE HERE FOR YOUR STUDENTS



Welcome Days

Two full days dedicated to international students before teaching begins



Buddy System

To fit in and help each other out



Exchange Fair

An afternoon to present and taste international food



35% international students

Our International team is dedicated to helping your students

OUR PARTNERSHIPS - YOUR OPPORTUNITY



Over 10 dual degrees



Partnerships

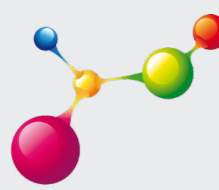
IChemE

Institution of Chemical Engineers



Erasmus+

Fédération
Gay-Lussac



Université
franco-allemande
Deutsch-Französische
Hochschule



NANCY IS A
UNESCO WORLD
HERITAGE SITE

ENSIC is located in Nancy's historical city center

90 minutes from Paris by train

In the heart of Europe



Contacts

ENSIC

1, rue Grandville
BP 20451
F - 54001 Nancy Cedex

☎ +33 (0)3 72 74 36 00

@ ensic-contact@univ-lorraine.fr

www.ensic.univ-lorraine.fr



Dimitrios Meimaroglou

Director of International Partnerships

☎ +33 (0)3 72 74 36 08

@ dimitrios.meimaroglou@univ-lorraine.fr

Cécile Lemaître

Deputy director of International Partnerships

☎ +33 (0)3 72 74 36 08

@ cecile.lemaître@univ-lorraine.fr



ENSIC

➔ A TOP-RANKING CHEMICAL
ENGINEERING SCHOOL
IN FRANCE

October 2024



WELCOME TO ENSIC

The heart of Chemical Engineering
at the Université de Lorraine



1st French University
in Chemical Engineering
in the Shanghai ranking since 2017

4000 graduates
working worldwide

2 internationally renowned
research laboratories

2 master engineering
programs and 1 master research
program

**Institution of chemical
engineers**

Study in Nancy

IChemE EUR-ACE®

- Over 500 students
- More than 50 academic partnerships worldwide

- Over 51 000 students
- 4th biggest university centre for engineering in France
- 400 € rent (average)
- 6 halls of residence

TOP RANKING EXPERTISE IN CHEMISTRY AND CHEMICAL ENGINEERING

Chemical Engineering
« I2C » M. Eng degree

Chemical Engineering with Industrial Experience
« FITI » M. Eng degree

Chemical Process and BioProcess Engineering
« GPBP » Research Master

**Highly selective & competitive
national admission**

**Admission based on qualifications
at S5 level**

**Admission based on qualifications
at S5 level**

- 3 years
- 3 options :
 - Process engineering for energy and environment
 - Bioprocess engineering
 - Innovative products : from chemistry to processes

- 120 graduates per year
- 1 semester abroad
- Possible parallel « GPBP » Research Master

- 3 years
- Dual-degree program opportunity with the Hochschule Mannheim

- 35 graduates per year
- From 2nd year (S7 to S10) : either student status or by apprenticeship

- « CHIPS » : process, products, polymers, AI for Process
- « BIO PROCEDES » : bioprocesses
- International Master « BIOWARE » : biorefinery engineering of wood and agro-resources

Offered by :



ENGINEERING STUDIES IN FRANCE

S1	S2	S3	S4	S5	S6	S7	S8	S9	S10	
Preparatory class				ENSIC Engineering School						PhD Program
Bachelor				Master M1		Master M2				
60 European Credits		120		180		240		300		480



RESEARCH OPPORTUNITIES

2 world-renowned research laboratories CNRS - Université de Lorraine
120 PhD students - 17 research teams



**Reactions and Chemical
Engineering Laboratory (LRGP)**

**Macromolecular Physical
Chemistry Laboratory (LCPM)**

- Processes for environment, safety and resource valorization
- Intensification, optimization and architectures of processes
- Bioprocesses, biomolecules
- Kinetics and thermodynamics for energy and products
- Product engineering

- Self-assembly and smart materials
- Biomolecules and vectorization